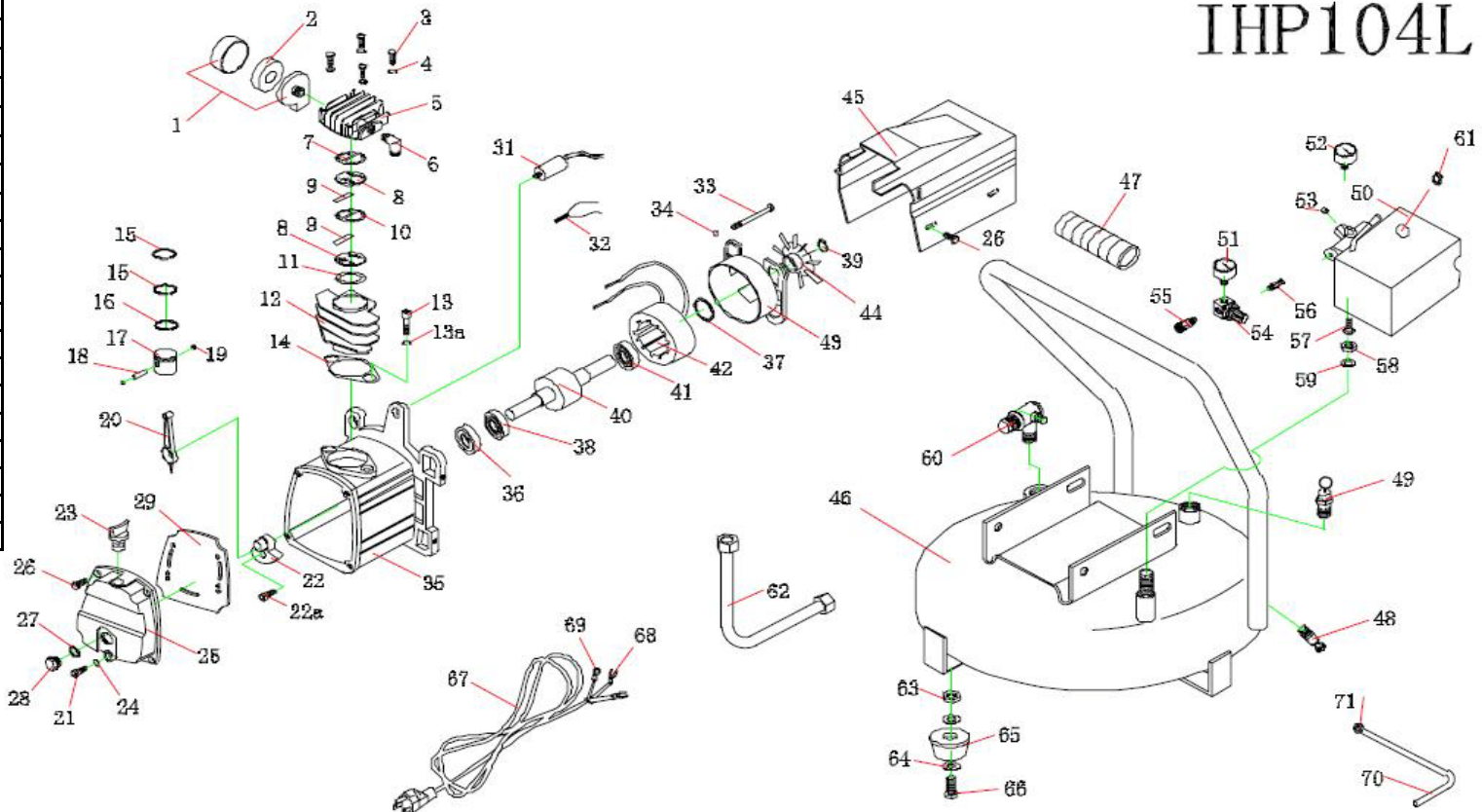


Eagle Air Compressor part breakdown - IHP104L

Item	Description	Part	Item	Description	Part	Item	Description	Part
1	Filter	IH1072	37	Spring washer wave	IH2209	55	Quick connect	IH0001
2	Filter element		38	Bearing	IH0140	56	Nipple	IH0003
3	Head bolt	IH30551	39	Circlip	IH1101	57	Connector	IH1045
4	Spring washer	IH1211	40	Rotor	IH1919	58	Nut	IH1045
5	Cylinder head	IH1343	41	Rear bearing	IH0150	59	Gasket	IH1045
6	Exhasut elbow	IH1086A	42	Stator	IH1918A	60	Check valve	IH2026B
7	Head gasket	IH1051	43	Rear motor cover	IH1046	61	Strain relief	IH2206
8	Valve plate	IH1064	44	Fan	IH1044	62	Exhaust pipe w/fittings	IH1175
9	Reed valve	IH1052	45	Shroud	IH2024	63	Nut	IH1500
10	Valve plate gasket	IH1049	46	Tank	IH2050	64	Flat washer	IH1059
11	Valve/Cyl gasket	IH1053	47	Handle	IH1528	65	Cushion foot	IH2200
12	Cylinder	IH2034B	48	Drain valve	IH1850	66	Bolt	IH1501
13	Bolt	IH2035	49	Safety valve	IH1090	67	Power cord	IH1841
13a	Spring washer	IH1212	50	Pressure switch	IH2025	68	Terminal (Y)	
14	Cyl/Crank gasket	IH1225	51	Pressure gauge	IH1177	69	Terminal (O)	
15	Compression ring	IH2039M	52	Pressure gauge	IH1177	70	Unloading tube w/fittings	IH1315
16	Oil ring	IH2039N	53	Plug	IH1360			
17	Piston	IH2038B	54	Regulator	R46-200-RNLA			
18	Piston pin	IH1534B						
19	Snap ring	IH1420						
20	Connecting rod	IH1066B						
21	Bolt	IH2207						
22	Crankshaft	IH1068A						
22a	Bolt M8x22MM-LH	IH1802						
23	Breather	IH1071						
24	O Ring	IH1591A						
25	Crankcase cover	IH2021						
26	Bolt	IH0621						
27	Oil sight glass gasket	IH1591						
28	Oil sight glass	IH1519						
29	Crankcase cover gasket	IH2019						
30	Nut	IH1500						
31	Running capacitor	IH2250						
32	Overload protector	IH2000						
33	Bolt	IH1048						
34	Spring washer	IH2210						
35	Crankcase	IH2020						
36	Oil seal	IH0530						



# IRON HORSE

**Wood**  
INDUSTRIES  
INCORPORATED

IHP104L



Call 1-800-551-2406 for the Customer Service Department.